

## ECOWARM QUICK REFERENCE INSTALL TIPS

---

Note: Ecowarm straights and combos are made differently. Information about why end combos are different is within your installation box.

1

### Use the correct PEX.

Do not use PERT or PEX-AL-PEX with Ecowarm, use standard ASTM 876-877 1/2" PEX supplied by a host of manufacturers. All brands that meet this standard are OK.

2

### Layout & Gluing

Cut the and place the panels according to your set of plans, then apply construction adhesive to the bottom of the boards. Align the grooves and staple or screw to the sub-floor.



3

**Groove Alignment Tip.** Cut small pieces of the 1/2" PEX pipe to use as groove alignment for the boards. Step or pound these tubing guides into the boards to align them.



Cut perforations with combo tool.



Walk tubing into panel grooves.

## END COMBO TUBING INSTALLATION

---

When installing tubing in the chosen perforated end combo channels, the following method is recommended:

- For a professional look, use the Ecowarm combo tool supplied in your installation box to cut the perforations of the end combo groove selected for insertion of tubing. Push downward, do not pull up.
- PEX tubing may be walked into the straight groove sections and pounded in with a rubber mallet at the curves. Don't worry. PEX is tough stuff!

## INSTALLING TUBING IN ECOWARM STRAIGHT BOARDS

---



### About Straight Boards

Straight boards are grooved with aluminum folded against the side of the groove, then placed in the bottom of the channel.



### Install Tubing in Channels

Tubing is easy to walk into the channels of the straights, or a rubber mallet can help. Don't worry, Ecowarm grooves are designed to be tight with a patented overbite that ensures a strong connect between the tube and the groove wall.



### Routing Tips

There are instances where some free form routing with a 5/8" bit can save time, particularly at the manifold locations.

# CUTTING ECOWARM BOARDS

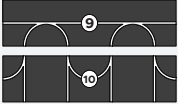
## EWP-C1

Regular Combo  
Item #3



## EWP-C1/2HTop

Top Half Combo  
Item #9



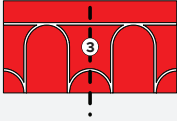
## EWP-C1/2HTop

Bottom Half Combo  
Item #10



## EWP-C1

Regular Combo  
Item #3



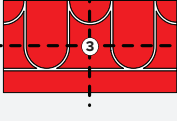
## EWP-C1/2

1/2 Regular Combo  
Item #2



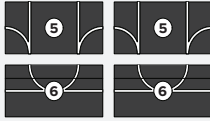
## EWP-C1

Regular Combo  
Item #3



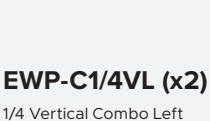
## EWP-C1/4Top (x2)

1/4 Combo w 2 1/4 Circles  
Item #5



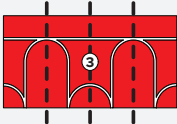
## EWP-C1/4Bottom (x2)

1/4 Combo w 1/2 Circles  
Item #6



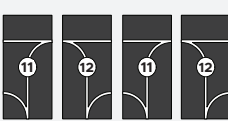
## EWP-C1

Regular Combo  
Item #3



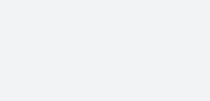
## EWP-C1/4VL (x2)

1/4 Vertical Combo Left  
Item #11



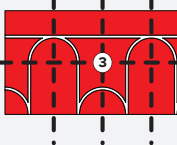
## EWP-C1/4VR (x2)

1/4 Vertical Combo Right  
Item #12



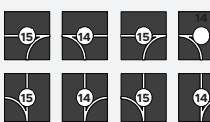
## EWP-C1

Regular Combo  
Item #3



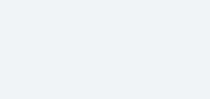
## EWP-C1/8RH (x4)

1/8 Combo Right  
Item #14



## EWP-C1/8RH (x4)

1/8 Combo Left  
Item #15



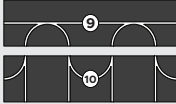
## EWP-C1

Regular Combo  
Item #3



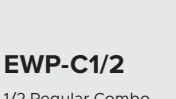
## EWP-C1/2HTop

Top Half Combo  
Item #9



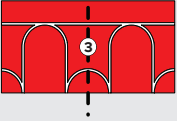
## EWP-C1/2HTop

Bottom Half Combo  
Item #10



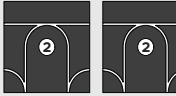
## EWP-C1

Regular Combo  
Item #3



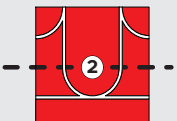
## EWP-C1/2

1/2 Regular Combo  
Item #2



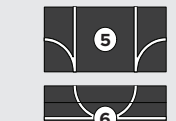
## EWP-C1/2

1/2 Regular Combo  
Item #2



## EWP-C1/4Top (x2)

1/4 Combo w 2 1/4 Circles  
Item #5



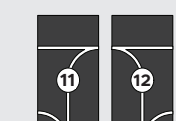
## EWP-C1/2

1/2 Regular Combo  
Item #2



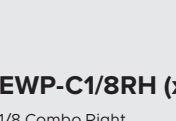
## EWP-C1/4VL (x2)

1/4 Vertical Combo Left  
Item #11



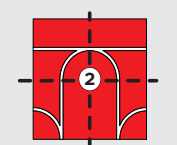
## EWP-C1/4VR (x2)

1/4 Vertical Combo Right  
Item #12



## EWP-C1/2

1/2 Regular Combo  
Item #2



## EWP-C1/8RH (x4)

1/8 Combo Right  
Item #14



## EWP-C1/8RH (x4)

1/8 Combo Left  
Item #15

